

One-touch fittings—threaded type

Ordering code

BB 01 01 □ - S

① ② ③ ④ ⑤

① Model	② Thread connection I	③ Thread connection II	④ Thread type	⑤ Material
BB: Male connector BD: Male & female connector[Note1] BU: Double female connector BZ: Hexagon head cap plug[Note2]	01: 1/8" 02: 1/4" 03: 3/8" 04: 1/2"	01: 1/8" 02: 1/4" 03: 3/8" 04: 1/2"	Blank: PT	S: SUS304

[Note1] For BD series, Thread I is Female thread, Thread II is male thread; [Note2] For BZ series, no thread II and thread I is male thread.

Specification

Operating pressure range	0~10kgf/cm ² (0~1.0MPa)
Negative pressure	-750mmHg(10Torr)
Proof pressure	3.0MPa
Ambient and fluid temperature (°C)	0~150

Configuration table of tubing thread

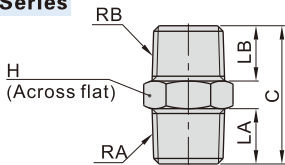
Product series	Thread connection I	Thread connection II			
		01	02	03	04
BB	01	●	●	●	
	02		●	●	●
	03			●	●
	04				●
BD	01		●	●	●
	02			●	●
	03				●
	04				
BU	01	●			
	02		●		
	03			●	
	04				●
Product series	Thread connection				
	01	02	03	04	
BZ	●	●	●	●	

Product feature

1. Variable models can be widely used in every kind of pneumatic systems.
2. High circulation performance bear the same flow with the volume of the tube inner diameter.
3. Metal fittings can be used in high temperature environment.

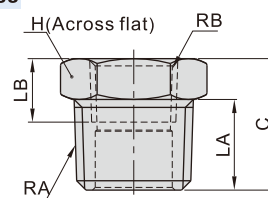
Dimensions

BB Series



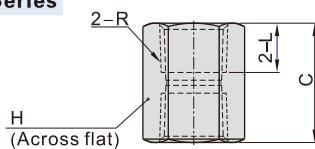
Model\Item	RA	RB	LA	LB	C	H	Weight(g)
BB0101	1/8"	1/8"	7.5	7.5	19.5	10	6
BB0102	1/4"	1/8"	10	7.5	22.5	14	11
BB0103	3/8"	1/8"	11	7.5	24	17	17
BB0202	1/4"	1/4"	10	10	25	14	13.5
BB0203	3/8"	1/4"	11	10	26.5	17	19
BB0204	1/2"	1/4"	14	10	30	21	31.5
BB0303	3/8"	3/8"	11	11	27.5	17	21.5
BB0304	1/2"	3/8"	14	11	31	21	33
BB0404	1/2"	1/2"	14	14	34	21	39.5

BD Series



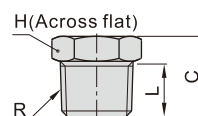
Model\Item	RA	RB	LA	LB	C	H	Weight(g)
BD0102	1/4"	1/8"	10	8	14.5	14	8
BD0103	3/8"	1/8"	11	8	16	17	15.5
BD0104	1/2"	1/8"	14	8	19.5	21	31
BD0203	3/8"	1/4"	11	11	16	17	11.5
BD0204	1/2"	1/4"	14	11	19.5	21	28
BD0304	1/2"	3/8"	14	12	19.5	21	20.5

BU Series



Model\Item	R	L	C	H	Weight(g)
BU0101	1/8"	8	17	12	8
BU0202	1/4"	11	23	17	23.5
BU0303	3/8"	12	25	21	36.5
BU0404	1/2"	13.5	28	24	42.5

BZ Series



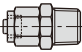
Model\Item	R	L	C	H	Weight(g)
BZ01	1/8"	7.5	11	10	4
BZ02	1/4"	10	14.5	14	10
BZ03	3/8"	11	16	17	16.5
BZ04	1/2"	14	19.5	21	30

One-touch fittings—threaded type

Ordering code

BKC 06 04 - 01 □ - S

① ② ③ ④ ⑤ ⑥

① Model	② Tubing outer diameter	③ Tubing inner diameter	④ Thread connection	⑤ Thread type	⑥ Material
BKC: Straight locknut connector 	04: Φ 4mm 06: Φ 6mm 08: Φ 8mm 10: Φ 10mm 12: Φ 12mm	25: Φ 2.5mm 04: Φ 4mm 05: Φ 5mm 06: Φ 6mm 65: Φ 6.5mm 75: Φ 7.5mm 08: Φ 8mm 09: Φ 9mm	M3: M3X0.5 M5: M5X0.8 01: 1/8" 02: 1/4" 03: 3/8" 04: 1/2"	Blank: PT	S: SUS304

Note: When using the tubing $\Phi 8 \times \Phi 5.5$, the straight lock nut connector of BKC0806 can be used.

Specification

Operating pressure range	0~10kgf/cm ² (0~1.0MPa)
Negative pressure	-750mmHg(10Torr)
Proof pressure	3.0MPa
Ambient and fluid temperature (°C)	0~150

Note: The temperature resistance level of the tubing should be confirmed first when used in high temperature environments.

Product feature

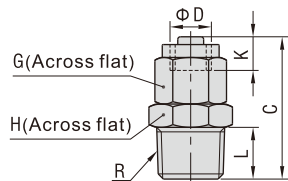
1. Variable models can be widely used in every kind of pneumatic systems.
2. High circulation performance bear the same flow with the volume of the tube inner diameter.
3. Metal fittings can be used in high temperature environments.

Configuration table of tubing and tubing thread

Product series	Tubing outer diameter	Tubing inner diameter	Thread connection					
			M3	M5	01	02	03	04
BKC	04	25	●	●	●	●	●	●
	06	04			●	●	●	
	08	05			●	●	●	
		06			●	●	●	
	10	65				●	●	●
		75				●	●	●
	12	08				●	●	●
		09				●	●	●

Dimensions

BKC Series



Model\Item	Tubing diameter Φ D		R	L	C	K	G	H	Weight(g)	Model\Item	Tubing diameter Φ D		R	L	C	K	G	H	Weight(g)	
	O.D	I.D									O.D	I.D								
BKC0425-M3	4	2.5	M3x0.5	3	17	5	8	8	4	BKC1065-02	10	6.5	1/4"	10	30	7.5	15	15	22	
BKC0425-M5				3.5	17.5			8	4.5	BKC1065-03				11	31.5			17	26.5	
BKC0425-01				7.5	20.5			10	6.5	BKC1065-04				12	35.5			21	40.5	
BKC0604-01	6	4	1/8"	7.5	22	5.5	10	10	9	BKC1075-02	10	7.5 or 8	1/4"	10	30	7.5	15	15	22	
BKC0604-02				1/4"	10			25.5	14	14.5				BKC1075-03	11			31.5	17	26.5
BKC0604-03				3/8"	11			27	17	20.5				BKC1075-04	12			35.5	21	40
BKC0805-01	8	5	1/8"	7.5	24	6.5	12	12	11.5	BKC1208-02	12	8	1/4"	10	30	7.5	17	17	28	
BKC0805-02				1/4"	10			27.5	14	16				BKC1208-03	11			31.5	17	29.5
BKC0805-03				3/8"	11			29	17	21.5				BKC1208-04	12			35.5	21	42.5
BKC0806-01	8	5.5 or 6	1/8"	7.5	24	6.5	12	12	12	BKC1209-02	12	g or 10	1/4"	10	30	7.5	17	17	28	
BKC0806-02				1/4"	10			27.5	14	15.5				BKC1209-03	11			31.5	17	29
BKC0806-03				3/8"	11			29	17	21.5				BKC1209-04	12			35.5	21	42.5

Installation and application

1. Method of inserting or removal a tubing
 - 1.1 Inserting a tubing
Place the locking cap over the tubing, and insert the tubing into the body, then tighten the locking cap. (As figure 1)
 - 1.2 Removing a tubing
Loosen the locking cap first, then remove the tubing. (As figure 2)
2. Method of tightening the connector thread
Tighten the connector with a hex wrench, as shown right.

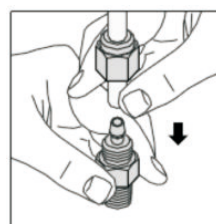


Figure 1

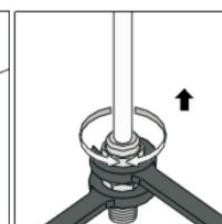


Figure 2

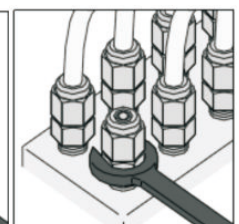


Figure 3